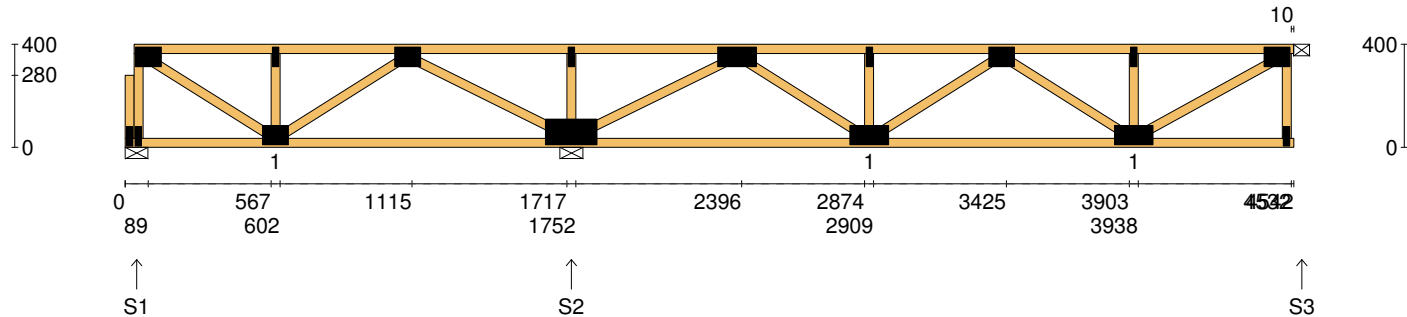


Client: DEDICATED DEVELOPMENT PTY LTD	Trusstech SA Pty Ltd 16 High St., Dry Creek, SA 5094	Job No: TT02399
Site: 638 BURBRIDGE RD WEST BEACH SA 5024 AUS		Weight: 27.19 kg
Ref: DWELLING 3	Joist Name: FJ1 Type: SJ 400 Joists: FJ1	Total Weight: 27.19 kg
		Laminations: 1



TIMBER / PLATES


Member	Size	Plating	Restraint
BC1	90x35-MGP10 H0 ADS	JD5	600
LBlock1	90x35-MGP10 H0 ADS	JD5	
LEW1	90x35-MGP10 H0 ADS	JD5	
TC1	90x35-MGP10 H0 ADS	JD5	300
W1	90x35-MGP10 H0 ADS	JD5	
W2	90x35-MGP10 H0 ADS	JD5	
W3	90x35-MGP10 H0 ADS	JD5	
W4	90x35-MGP10 H0 ADS	JD5	
W5	90x35-MGP10 H0 ADS	JD5	
W6	90x35-MGP10 H0 ADS	JD5	
W7	90x35-MGP10 H0 ADS	JD5	
W8	90x35-MGP10 H0 ADS	JD5	
W9	90x35-MGP10 H0 ADS	JD5	

- 4 more members were not shown -

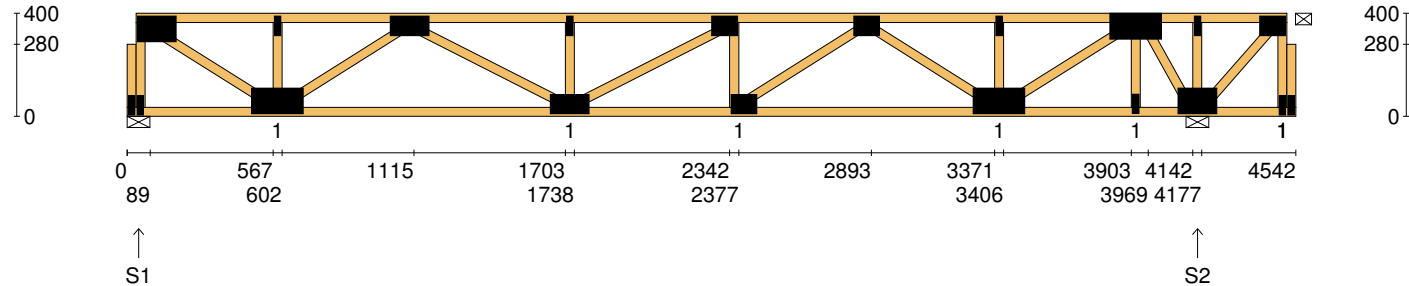
Vertical Reactions at Supports

	S1	S2	S3
1.35DL (kN)	0.17	0.92	0.39
1.2DL + 1.5LL (kN)	0.79	4.62	1.92

Joint	Nail Plate	Joint	Nail Plate
BL1-1	25x75-MN	T8	25x75-MN
T1	75x100-MN	BR1	25x75-MN
BL1	25x75-MN	T9	75x100-MN
B1	75x100-MN		
T2	25x75-MN		
T3	75x100-MN		
B2	100x200-MN		
T4	25x75-MN		
T5	75x150-MN		
B3	75x150-MN		
T6	25x75-MN		
T7	75x100-MN		
B4	75x150-MN		

Span: 4542	Floor Material: Particle (15.4 kg/m²)	Application: General Areas	All dimensions in millimetres. This drawing should be read in conjunction with Multinail Technical sheets. Wall plates must be placed at supports only.	016020 (TN-016-020)
Overhang: 0/0	Floor Covering: Std Carpet + Underlay (8 kg/m²)	Live Load: 1.5 kPa		Ver: Floor 1.9.4
Spacing: 600	Ceiling Material: Plaster 10mm Supa Span (8.2 kg/m²)	Point Load: 1.8 kN		Date: 14/02/2019
Quantity: 1	Ceiling Fixing: Metal direct @ 600c	Design: AS 1720.1-2010		Page: 1 of 27

Client: DEDICATED DEVELOPMENT PTY LTD	Trusstech SA Pty Ltd 16 High St., Dry Creek, SA 5094	Job No: TT02399
Site: 638 BURBRIDGE RD WEST BEACH SA 5024 AUS	Joist Name: FJ2 Type: SJ 400	Weight: 29.67 kg
Ref: DWELLING 3	Joists: FJ2, FJ3, FJ4, FJ5, FJ6	Total Weight: 148.33 kg
		Laminations: 1



TIMBER / PLATES


Member	Size	Plating	Restraint
BC1	90x35-MGP10 H0 ADS	JD5	600
LBlock1	90x35-MGP10 H0 ADS	JD5	
LEW1	90x35-MGP10 H0 ADS	JD5	
TC1	90x35-MGP10 H0 ADS	JD5	300
W1	90x35-MGP10 H0 ADS	JD5	
W2	90x35-MGP10 H0 ADS	JD5	
W3	90x35-MGP10 H0 ADS	JD5	
W4	90x35-MGP10 H0 ADS	JD5	
W5	90x35-MGP10 H0 ADS	JD5	
W6	90x35-MGP10 H0 ADS	JD5	
W7	90x35-MGP10 H0 ADS	JD5	
W8	90x35-MGP10 H0 ADS	JD5	
W9	90x35-MGP10 H0 ADS	JD5	

- 8 more members were not shown -

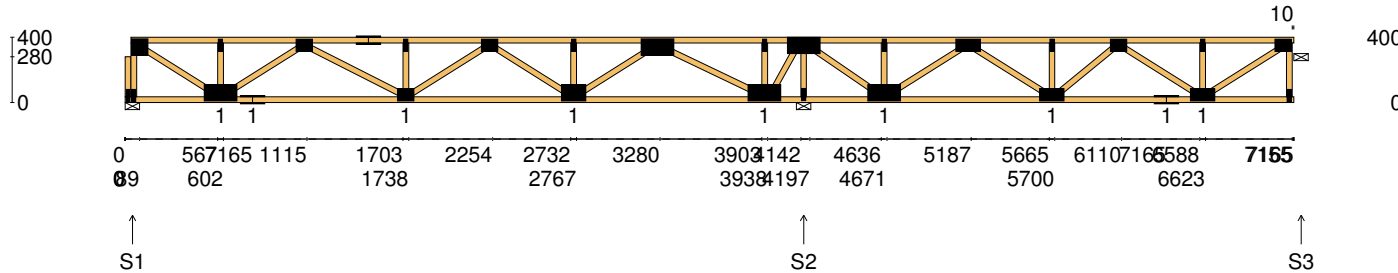
Vertical Reactions at Supports

	S1	S2
1.35DL (kN)	0.68	0.81
1.2DL + 1.5LL (kN)	3.36	3.96

Joint	Nail Plate	Joint	Nail Plate
BL1-1	25x75-MN	T8	100x200-MN
T1	100x150-MN	B5	25x75-MN
BL1	25x75-MN	B6	100x150-MN
B1	100x200-MN	T9	25x75-MN
T2	25x75-MN	BR1	25x75-MN
T3	75x150-MN	T10	75x100-MN
B2	75x150-MN	BR1-1	25x75-MN
T4	25x75-MN		
T5	75x100-MN		
B3	75x100-MN		
T6	75x100-MN		
B4	100x200-MN		
T7	25x75-MN		

Span: 4542	Floor Material: Particle (15.4 kg/m²)	Application: General Areas	All dimensions in millimetres. This drawing should be read in conjunction with Multinail Technical sheets.	016020 (TN-016-020)
Overhang: 0/0	Floor Covering: Std Carpet + Underlay (8 kg/m²)	Live Load: 1.5 kPa	Wall plates must be placed at supports only.	Ver: Floor 1.9.4
Spacing: 600	Ceiling Material: Plaster 10mm Supa Span (8.2 kg/m²)	Point Load: 1.8 kN		Date: 14/02/2019
Quantity: 5	Ceiling Fixing: Metal direct @ 600c	Design: AS 1720.1-2010		Page: 2 of 27

Client: DEDICATED DEVELOPMENT PTY LTD	Trusstech SA Pty Ltd 16 High St., Dry Creek, SA 5094	Job No: TT02399
Site: 638 BURBRIDGE RD WEST BEACH SA 5024 AUS		Weight: 44.80 kg
Ref: DWELLING 3	Joist Name: FJ3 Type: SJ 400 Joists: FJ7, FJ8	Total Weight: 89.59 kg
		Laminations: 1



TIMBER / PLATES

Member	Size	Plating	Restraint
BC1	90x35-MGP10 H0 ADS	JD5	600
LBlock1	90x35-MGP10 H0 ADS	JD5	
LEW1	90x35-MGP10 H0 ADS	JD5	
TC1	90x35-MGP10 H0 ADS	JD5	300
W1	90x35-MGP10 H0 ADS	JD5	
W2	90x35-MGP10 H0 ADS	JD5	
W3	90x35-MGP10 H0 ADS	JD5	
BC2	90x35-MGP10 H0 ADS	JD5	600
W4	90x35-MGP10 H0 ADS	JD5	
TC2	90x35-MGP10 H0 ADS	JD5	300
W5	90x35-MGP10 H0 ADS	JD5	
W6	90x35-MGP10 H0 ADS	JD5	
W7	90x35-MGP10 H0 ADS	JD5	


- 17 more members were not shown -

Vertical Reactions at Supports

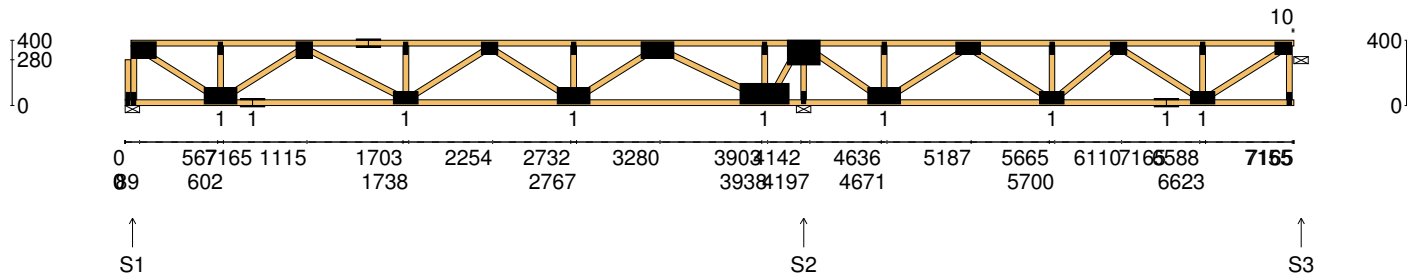
	S1	S2	S3
1.35DL (kN)	0.56	1.47	0.32
1.2DL + 1.5LL (kN)	2.75	7.31	1.59

Joint	Nail Plate	Joint	Nail Plate
BL1-1	25x75-MN	T8	100x200-MN
T1	100x100-MN	B5	100x200-MN
BL1	25x75-MN	T9	25x75-MN
B1	100x200-MN	T10	100x200-MN
T2	25x75-MN	B6	25x75-MN
B2	75x150-MN	B7	100x200-MN
T3	75x100-MN	T11	25x75-MN
T4	75x150-MN	T12	75x150-MN
B3	75x100-MN	B8	75x150-MN
T5	25x75-MN	T13	25x75-MN
T6	75x100-MN	T14	75x100-MN
B4	100x150-MN	B9	75x150-MN
T7	25x75-MN	T16	75x100-MN

- 3 more nail plates were not shown -

Span: 7165	Floor Material: Particle (15.4 kg/m²)	Application: General Areas	All dimensions in millimetres. This drawing should be read in conjunction with Multinail Technical sheets. Wall plates must be placed at supports only.	016020 (TN-016-020)
Overhang: 0/0	Floor Covering: Std Carpet + Underlay (8 kg/m²)	Live Load: 1.5 kPa		Ver: Floor 1.9.4
Spacing: 600	Ceiling Material: Plaster 10mm Supa Span (8.2 kg/m²)	Point Load: 1.8 kN		Date: 14/02/2019
Quantity: 2	Ceiling Fixing: Metal direct @ 600c	Design: AS 1720.1-2010		Page: 3 of 27

Client: DEDICATED DEVELOPMENT PTY LTD	Trusstech SA Pty Ltd 16 High St., Dry Creek, SA 5094	Job No: TT02399
Site: 638 BURBRIDGE RD WEST BEACH SA 5024 AUS		Weight: 45.56 kg
Ref: DWELLING 3	Joist Name: FJ4 Type: SJ 400 Joists: FJ9	Total Weight: 45.56 kg
		Laminations: 1



TIMBER / PLATES

Member	Size	Plating	Restraint
BC1	90x35-MGP10 H0 ADS	JD5	600
LBlock1	90x35-MGP10 H0 ADS	JD5	
LEW1	90x35-MGP10 H0 ADS	JD5	
TC1	90x35-MGP10 H0 ADS	JD5	300
W1	90x35-MGP10 H0 ADS	JD5	
W2	90x35-MGP10 H0 ADS	JD5	
W3	90x35-MGP10 H0 ADS	JD5	
BC2	90x35-MGP10 H0 ADS	JD5	600
W4	90x35-MGP10 H0 ADS	JD5	
TC2	90x35-MGP10 H0 ADS	JD5	300
W5	90x35-MGP10 H0 ADS	JD5	
W6	90x35-MGP10 H0 ADS	JD5	
W7	90x35-MGP10 H0 ADS	JD5	


- 17 more members were not shown -

Vertical Reactions at Supports

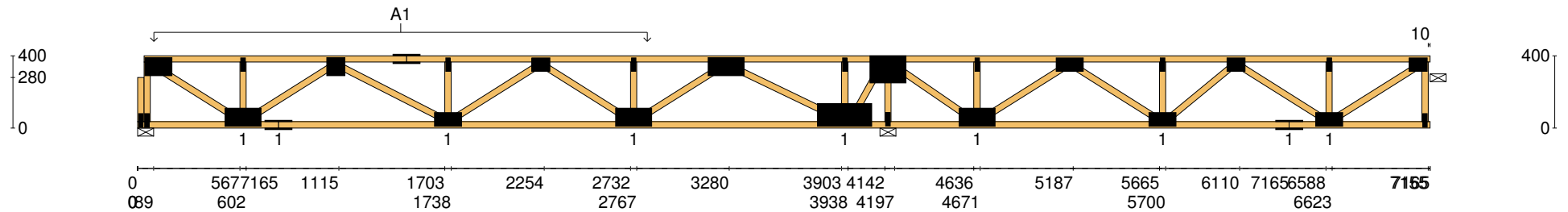
	S1	S2	S3
1.35DL (kN)	0.95	1.81	0.26
1.2DL + 1.5LL (kN)	3.41	7.88	1.48


Joint	Nail Plate	Joint	Nail Plate
BL1-1	25x75-MN	T8	100x200-MN
T1	100x150-MN	B5	125x300-MN
BL1	25x75-MN	T9	25x75-MN
B1	100x200-MN	T10	150x200-MN
T2	25x75-MN	B6	25x75-MN
B2	75x150-MN	B7	100x200-MN
T3	100x100-MN	T11	25x75-MN
T4	75x150-MN	T12	75x150-MN
B3	75x150-MN	B8	75x150-MN
T5	25x75-MN	T13	25x75-MN
T6	75x100-MN	T14	75x100-MN
B4	100x200-MN	B9	75x150-MN
T7	25x75-MN	T16	75x100-MN

- 3 more nail plates were not shown -

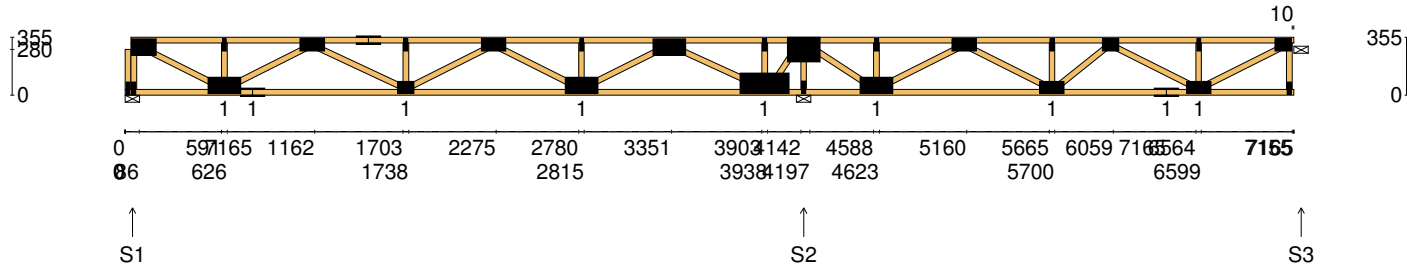
Span: 7165	Floor Material: Particle (15.4 kg/m²)	Application: General Areas	All dimensions in millimetres. This drawing should be read in conjunction with Multinail Technical sheets. Wall plates must be placed at supports only.	016020 (TN-016-020)
Overhang: 0/0	Floor Covering: Std Carpet + Underlay (8 kg/m²)	Live Load: 1.5 kPa		Ver: Floor 1.9.4
Spacing: 600	Ceiling Material: Plaster 10mm Supa Span (8.2 kg/m²)	Point Load: 1.8 kN		Date: 14/02/2019
Quantity: 1	Ceiling Fixing: Metal direct @ 600c	Design: AS 1720.1-2010		Page: 4 of 27

Client: DEDICATED DEVELOPMENT PTY LTD	Trusstech SA Pty Ltd 16 High St., Dry Creek, SA 5094	Job No: TT02399
Site: 638 BURBRIDGE RD WEST BEACH SA 5024 AUS		Weight: 45.56 kg
Ref: DWELLING 3	Joist Name: FJ4 Type: SJ 400 Joists: FJ9	Total Weight: 45.56 kg
		Laminations: 1



User Def. Load		A1 165.07 kg/m ² WET AREA	
Applied Load			
DL	(kN)		
LL	(kN)		
WL Up	(kN)		
WL Dn	(kN)		
Span:	7165	Floor Material:	Particle (15.4 kg/m ²)
Overhang:	0/0	Floor Covering:	Std Carpet + Underlay (8 kg/m ²)
Spacing:	600	Ceiling Material:	Plaster 10mm Supa Span (8.2 kg/m ²)
Quantity:	1	Ceiling Fixing:	Metal direct @ 600c
		Application:	General Areas
		Live Load:	1.5 kPa
		Point Load:	1.8 kN
		Design:	AS 1720.1-2010
		All dimensions in millimetres. This drawing should be read in conjunction with Multinail Technical sheets. Wall plates must be placed at supports only.	
			
		016020 (TN-016-020)	
		Ver: Floor 1.9.4	
		Date: 14/02/2019	
		Page: 5 of 27	

Client: DEDICATED DEVELOPMENT PTY LTD	Trusstech SA Pty Ltd 16 High St., Dry Creek, SA 5094	Job No: TT02399
Site: 638 BURBRIDGE RD WEST BEACH SA 5024 AUS		Weight: 44.37 kg
Ref: DWELLING 3	Joist Name: FJ5 Type: SJ 355 Joists: FJ10, FJ11, FJ12, FJ13	Total Weight: 177.49 kg
		Laminations: 1



TIMBER / PLATES

Member	Size	Plating	Restraint
BC1	90x35-MGP10 H0 ADS	JD5	600
LBlock1	90x35-MGP10 H0 ADS	JD5	
LEW1	90x35-MGP10 H0 ADS	JD5	
TC1	90x35-MGP10 H0 ADS	JD5	300
W1	90x35-MGP10 H0 ADS	JD5	
W2	90x35-MGP10 H0 ADS	JD5	
W3	90x35-MGP10 H0 ADS	JD5	
BC2	90x35-MGP10 H0 ADS	JD5	600
W4	90x35-MGP10 H0 ADS	JD5	
TC2	90x35-MGP10 H0 ADS	JD5	300
W5	90x35-MGP10 H0 ADS	JD5	
W6	90x35-MGP10 H0 ADS	JD5	
W7	90x35-MGP10 H0 ADS	JD5	


- 17 more members were not shown -

Vertical Reactions at Supports

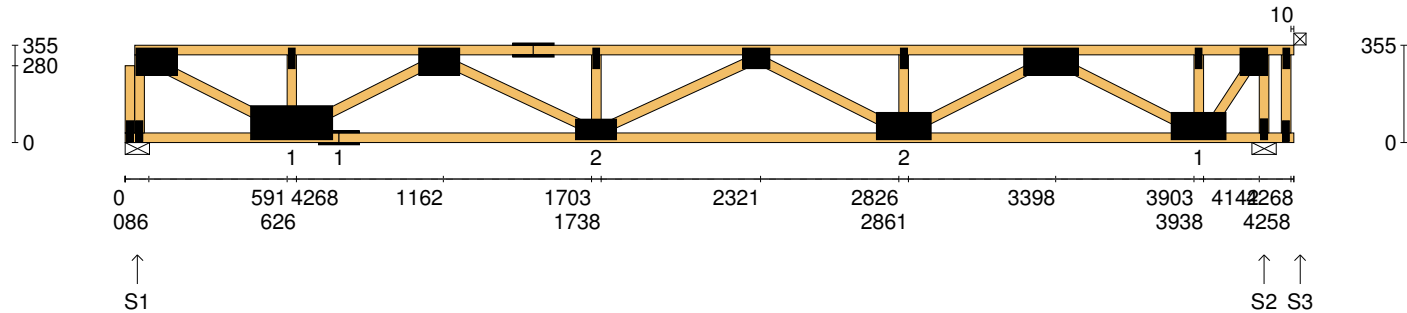
	S1	S2	S3
1.35DL (kN)	0.95	1.81	0.25
1.2DL + 1.5LL (kN)	3.40	7.90	1.46

Joint	Nail Plate	Joint	Nail Plate
BL1-1	25x75-MN	T8	100x200-MN
T1	100x150-MN	B5	125x300-MN
BL1	25x75-MN	T9	25x75-MN
B1	100x200-MN	T10	150x200-MN
T2	25x75-MN	B6	25x75-MN
B2	75x150-MN	B7	100x200-MN
T3	75x150-MN	T11	25x75-MN
T4	75x150-MN	T12	75x150-MN
B3	75x100-MN	B8	75x150-MN
T5	25x75-MN	T13	25x75-MN
T6	75x150-MN	T14	75x100-MN
B4	100x200-MN	B9	75x150-MN
T7	25x75-MN	T16	75x100-MN

- 3 more nail plates were not shown -

Span: 7165	Floor Material: Particle (15.4 kg/m²)	Application: General Areas	All dimensions in millimetres. This drawing should be read in conjunction with Multinail Technical sheets. Wall plates must be placed at supports only.	016020 (TN-016-020)
Overhang: 0/0	Floor Covering: Std Carpet + Underlay (8 kg/m²)	Live Load: 1.5 kPa		Ver: Floor 1.9.4
Spacing: 600	Ceiling Material: Plaster 10mm Supa Span (8.2 kg/m²)	Point Load: 1.8 kN		Date: 14/02/2019
Quantity: 4	Ceiling Fixing: Metal direct @ 600c	Design: AS 1720.1-2010		Page: 6 of 27

Client: DEDICATED DEVELOPMENT PTY LTD	Trusstech SA Pty Ltd 16 High St., Dry Creek, SA 5094	Job No: TT02399
Site: 638 BURBRIDGE RD WEST BEACH SA 5024 AUS		Weight: 27.18 kg
Ref: DWELLING 3	Joist Name: FJ6 Type: SJ 355 Joists: FJ14	Total Weight: 27.18 kg
		Laminations: 1



TIMBER / PLATES


Member	Size	Plating	Restraint
BC1	90x35-MGP10 H0 ADS	JD5	600
LBlock1	90x35-MGP10 H0 ADS	JD5	
LEW1	90x35-MGP10 H0 ADS	JD5	
TC1	90x35-MGP10 H0 ADS	JD5	300
W1	90x35-MGP10 H0 ADS	JD5	
W2	90x35-MGP10 H0 ADS	JD5	
W3	90x35-MGP10 H0 ADS	JD5	
BC2	90x35-MGP10 H0 ADS	JD5	600
W4	90x35-MGP10 H0 ADS	JD5	
TC2	90x35-MGP10 H0 ADS	JD5	300
W5	90x35-MGP10 H0 ADS	JD5	
W6	90x35-MGP10 H0 ADS	JD5	
W7	90x35-MGP10 H0 ADS	JD5	

- 7 more members were not shown -

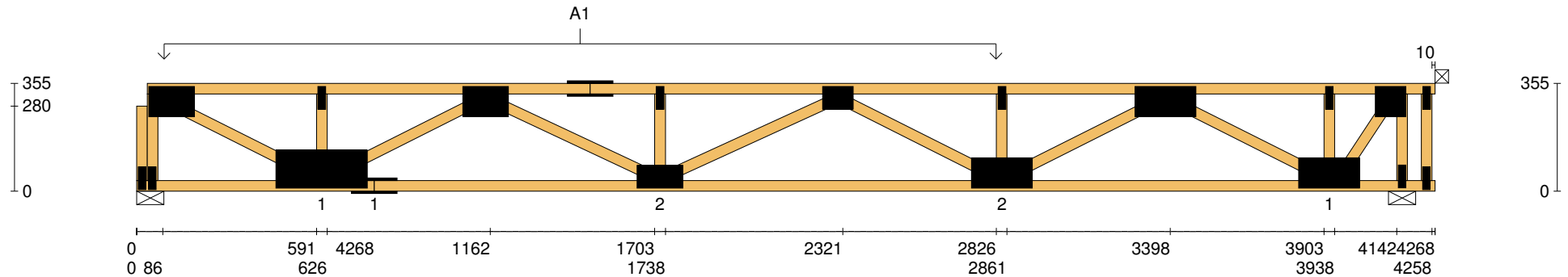
Vertical Reactions at Supports


	S1	S2	S3
1.35DL (kN)	1.11	1.56	-0.61
1.2DL + 1.5LL (kN)	4.06	6.38	-2.44

Joint	Nail Plate	Joint	Nail Plate
BL1-1	25x75-MN	T8	100x200-MN
T1	100x150-MN	B5	100x200-MN
BL1	25x75-MN	T9	25x75-MN
B1	125x300-MN	T10	100x100-MN
T2	25x75-MN	B6	25x75-MN
B2	75x150-MN	TR1	25x75-MN
T3	100x150-MN	BR2	25x75-MN
T4	75x150-MN		
B3	75x150-MN		
T5	25x75-MN		
T6	75x100-MN		
B4	100x200-MN		
T7	25x75-MN		

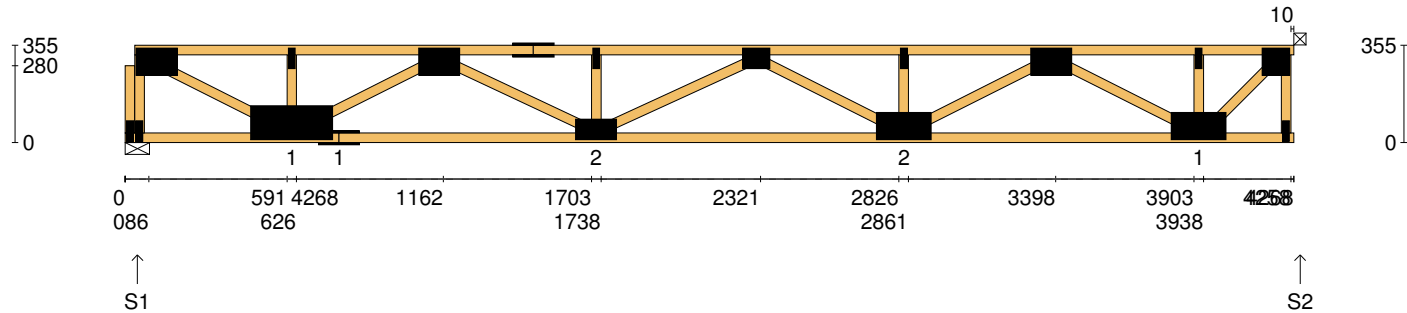
Span: 4268	Floor Material: Particle (15.4 kg/m²)	Application: General Areas	All dimensions in millimetres. This drawing should be read in conjunction with Multinail Technical sheets. Wall plates must be placed at supports only.	016020 (TN-016-020)
Overhang: 0/0	Floor Covering: Std Carpet + Underlay (8 kg/m²)	Live Load: 1.5 kPa		Ver: Floor 1.9.4
Spacing: 600	Ceiling Material: Plaster 10mm Supa Span (8.2 kg/m²)	Point Load: 1.8 kN		Date: 14/02/2019
Quantity: 1	Ceiling Fixing: Metal direct @ 600c	Design: AS 1720.1-2010		Page: 8 of 27

Client: DEDICATED DEVELOPMENT PTY LTD	Trusstech SA Pty Ltd 16 High St., Dry Creek, SA 5094	Job No: TT02399
Site: 638 BURBRIDGE RD WEST BEACH SA 5024 AUS		Weight: 27.18 kg
Ref: DWELLING 3	Joist Name: FJ6 Type: SJ 355 Joists: FJ14	Total Weight: 27.18 kg
		Laminations: 1



User Def. Load		A1 165.07 kg/m ² WET AREA	
Applied Load			
DL	(kN)		
LL	(kN)		
WL Up	(kN)		
WL Dn	(kN)		
Span:	4268	Floor Material:	Particle (15.4 kg/m ²)
Overhang:	0/0	Floor Covering:	Std Carpet + Underlay (8 kg/m ²)
Spacing:	600	Ceiling Material:	Plaster 10mm Supa Span (8.2 kg/m ²)
Quantity:	1	Ceiling Fixing:	Metal direct @ 600c
		Application:	General Areas
		Live Load:	1.5 kPa
		Point Load:	1.8 kN
		Design:	AS 1720.1-2010
		All dimensions in millimetres. This drawing should be read in conjunction with Multinail Technical sheets. Wall plates must be placed at supports only.	
			
		016020 (TN-016-020)	
		Ver: Floor 1.9.4	
		Date: 14/02/2019	
		Page: 9 of 27	

Client: DEDICATED DEVELOPMENT PTY LTD	Trusstech SA Pty Ltd 16 High St., Dry Creek, SA 5094	Job No: TT02399
Site: 638 BURBRIDGE RD WEST BEACH SA 5024 AUS		Weight: 26.67 kg
Ref: DWELLING 3	Joist Name: FJ7 Type: SJ 355 Joists: FJ15, FJ16	Total Weight: 53.33 kg
		Laminations: 1



TIMBER / PLATES


Member	Size	Plating	Restraint
BC1	90x35-MGP10 H0 ADS	JD5	600
LBlock1	90x35-MGP10 H0 ADS	JD5	
LEW1	90x35-MGP10 H0 ADS	JD5	
TC1	90x35-MGP10 H0 ADS	JD5	300
W1	90x35-MGP10 H0 ADS	JD5	
W2	90x35-MGP10 H0 ADS	JD5	
W3	90x35-MGP10 H0 ADS	JD5	
BC2	90x35-MGP10 H0 ADS	JD5	600
W4	90x35-MGP10 H0 ADS	JD5	
TC2	90x35-MGP10 H0 ADS	JD5	300
W5	90x35-MGP10 H0 ADS	JD5	
W6	90x35-MGP10 H0 ADS	JD5	
W7	90x35-MGP10 H0 ADS	JD5	

- 6 more members were not shown -

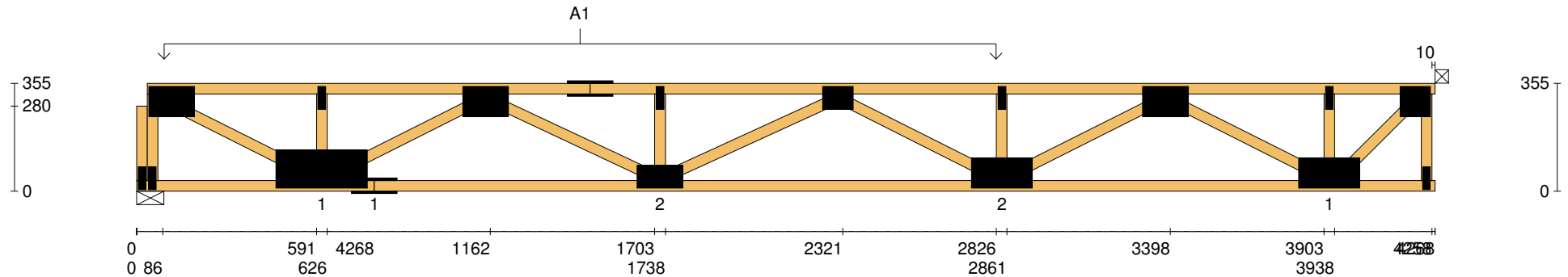
Vertical Reactions at Supports


	S1	S2
1.35DL (kN)	1.14	0.91
1.2DL + 1.5LL (kN)	4.18	3.81

Joint	Nail Plate	Joint	Nail Plate
BL1-1	25x75-MN	T8	100x150-MN
T1	100x150-MN	B5	100x200-MN
BL1	25x75-MN	T9	25x75-MN
B1	125x300-MN	BR1	25x75-MN
T2	25x75-MN	T10	100x100-MN
B2	75x150-MN		
T3	100x150-MN		
T4	75x150-MN		
B3	75x150-MN		
T5	25x75-MN		
T6	75x100-MN		
B4	100x200-MN		
T7	25x75-MN		

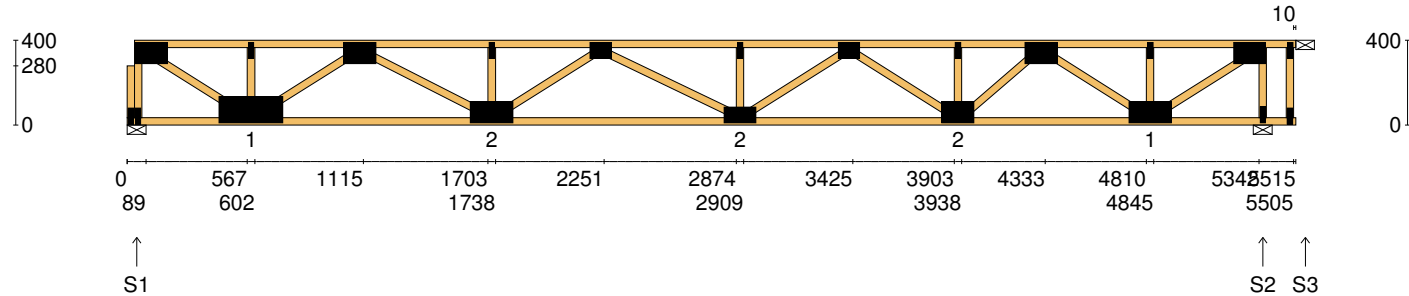
Span: 4268	Floor Material: Particle (15.4 kg/m²)	Application: General Areas	All dimensions in millimetres. This drawing should be read in conjunction with Multinail Technical sheets. Wall plates must be placed at supports only.	016020 (TN-016-020)
Overhang: 0/0	Floor Covering: Std Carpet + Underlay (8 kg/m²)	Live Load: 1.5 kPa		Ver: Floor 1.9.4
Spacing: 600	Ceiling Material: Plaster 10mm Supa Span (8.2 kg/m²)	Point Load: 1.8 kN		Date: 14/02/2019
Quantity: 2	Ceiling Fixing: Metal direct @ 600c	Design: AS 1720.1-2010		Page: 10 of 27

Client: DEDICATED DEVELOPMENT PTY LTD	Trusstech SA Pty Ltd 16 High St., Dry Creek, SA 5094	Job No: TT02399
Site: 638 BURBRIDGE RD WEST BEACH SA 5024 AUS		Weight: 26.67 kg
Ref: DWELLING 3	Joist Name: FJ7 Type: SJ 355 Joists: FJ15, FJ16	Total Weight: 53.33 kg
		Laminations: 1



User Def. Load		A1 165.07 kg/m ² WET AREA
Applied Load		
DL	(kN)	
LL	(kN)	
WL Up	(kN)	
WL Dn	(kN)	
Span:	4268	Floor Material: Particle (15.4 kg/m²)
Overhang:	0/0	Floor Covering: Std Carpet + Underlay (8 kg/m²)
Spacing:	600	Ceiling Material: Plaster 10mm Supa Span (8.2 kg/m²)
Quantity:	2	Ceiling Fixing: Metal direct @ 600c
Application: General Areas		All dimensions in millimetres. This drawing should be read in conjunction with Multinail Technical sheets. Wall plates must be placed at supports only.
Live Load: 1.5 kPa		
Point Load: 1.8 kN		
Design: AS 1720.1-2010		
		
		016020 (TN-016-020)
		Ver: Floor 1.9.4
		Date: 14/02/2019
		Page: 11 of 27

Client: DEDICATED DEVELOPMENT PTY LTD	Trusstech SA Pty Ltd 16 High St., Dry Creek, SA 5094	Job No: TT02399
Site: 638 BURBRIDGE RD WEST BEACH SA 5024 AUS	Joist Name: FJ8 Type: SJ 400	Weight: 34.41 kg
Ref: DWELLING 3	Joists: FJ18, FJ19, FJ20, FJ21, FJ22	Total Weight: 172.05 kg
		Laminations: 1



TIMBER / PLATES

Member	Size	Plating	Restraint
BC1	90x35-MGP10 H0 ADS	JD5	600
LBlock1	90x35-MGP10 H0 ADS	JD5	
LEW1	90x35-MGP10 H0 ADS	JD5	
TC1	90x35-MGP10 H0 ADS	JD5	300
W1	90x35-MGP10 H0 ADS	JD5	
W2	90x35-MGP10 H0 ADS	JD5	
W3	90x35-MGP10 H0 ADS	JD5	
W4	90x35-MGP10 H0 ADS	JD5	
W5	90x35-MGP10 H0 ADS	JD5	
W6	90x35-MGP10 H0 ADS	JD5	
W7	90x35-MGP10 H0 ADS	JD5	
W8	90x35-MGP10 H0 ADS	JD5	
W9	90x35-MGP10 H0 ADS	JD5	

- 8 more members were not shown -

Vertical Reactions at Supports

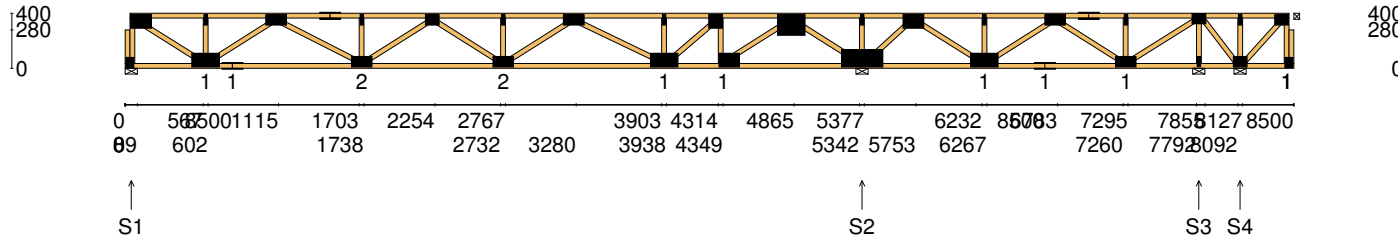
	S1	S2	S3
1.35DL (kN)	0.87	1.19	-0.26
1.2DL + 1.5LL (kN)	4.33	6.01	-1.40

Joint	Nail Plate	Joint	Nail Plate
BL1-1	25x75-MN	T8	25x75-MN
T1	100x150-MN	T9	100x150-MN
BL1	25x75-MN	B5	100x200-MN
B1	125x300-MN	T10	25x75-MN
T2	25x75-MN	T11	100x150-MN
T3	100x150-MN	B6	25x75-MN
B2	100x200-MN	TR1	25x75-MN
T4	25x75-MN	BR2	25x75-MN
T5	75x100-MN		
B3	75x150-MN		
T6	25x75-MN		
T7	75x100-MN		
B4	100x150-MN		

Span: 5515	Floor Material: Particle (15.4 kg/m²)	Application: General Areas	All dimensions in millimetres. This drawing should be read in conjunction with Multinail Technical sheets.	016020 (TN-016-020)
Overhang: 0/0	Floor Covering: Std Carpet + Underlay (8 kg/m²)	Live Load: 1.5 kPa	Wall plates must be placed at supports only.	Ver: Floor 1.9.4
Spacing: 600	Ceiling Material: Plaster 10mm Supa Span (8.2 kg/m²)	Point Load: 1.8 kN		Date: 14/02/2019
Quantity: 5	Ceiling Fixing: Metal direct @ 600c	Design: AS 1720.1-2010		Page: 12 of 27



Client: DEDICATED DEVELOPMENT PTY LTD	Trusstech SA Pty Ltd 16 High St., Dry Creek, SA 5094	Job No: TT02399
Site: 638 BURBRIDGE RD WEST BEACH SA 5024 AUS		Weight: 54.45 kg
Ref: DWELLING 3	Joist Name: FJ9 Type: SJ 400 Joists: FJ23	Total Weight: 54.45 kg
		Laminations: 1



TIMBER / PLATES

Member	Size	Plating	Restraint
BC1	90x35-MGP10 H0 ADS	JD5	600
LBlock1	90x35-MGP10 H0 ADS	JD5	
LEW1	90x35-MGP10 H0 ADS	JD5	
TC1	90x35-MGP10 H0 ADS	JD5	300
W1	90x35-MGP10 H0 ADS	JD5	
W2	90x35-MGP10 H0 ADS	JD5	
W3	90x35-MGP10 H0 ADS	JD5	
BC2	90x35-MGP10 H0 ADS	JD5	600
W4	90x35-MGP10 H0 ADS	JD5	
TC2	90x35-MGP10 H0 ADS	JD5	300
W5	90x35-MGP10 H0 ADS	JD5	
W6	90x35-MGP10 H0 ADS	JD5	
W7	90x35-MGP10 H0 ADS	JD5	


- 24 more members were not shown -

Vertical Reactions at Supports

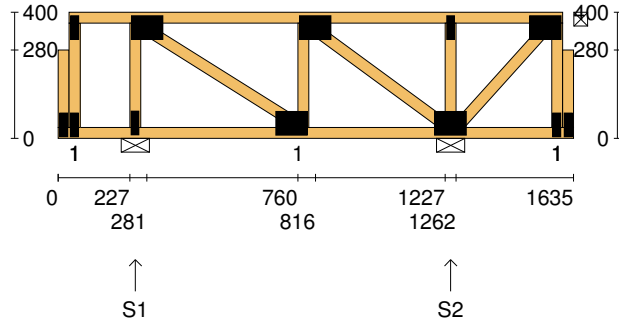
	S1	S2	S3	S4
1.35DL (kN)	0.73	1.77	-0.02	0.31
1.2DL + 1.5LL (kN)	3.59	8.85	-0.08	1.44

Joint	Nail Plate	Joint	Nail Plate
BL1-1	25x75-MN	T8	75x150-MN
T1	100x150-MN	B5	100x200-MN
BL1	25x75-MN	T9	25x75-MN
B1	100x200-MN	T10	100x100-MN
T2	25x75-MN	B6	100x150-MN
B2	75x150-MN	T11	150x200-MN
T3	75x150-MN	B7	125x300-MN
T4	75x150-MN	T12	25x75-MN
B3	75x150-MN	T13	100x150-MN
T5	25x75-MN	B8	100x200-MN
T6	75x100-MN	T14	25x75-MN
B4	75x150-MN	B9	75x150-MN
T7	25x75-MN	BR1-1	25x75-MN

- 10 more nail plates were not shown -

Span: 8500	Floor Material: Particle (15.4 kg/m²)	Application: General Areas	All dimensions in millimetres. This drawing should be read in conjunction with Multinail Technical sheets. Wall plates must be placed at supports only.	016020 (TN-016-020)
Overhang: 0/0	Floor Covering: Std Carpet + Underlay (8 kg/m²)	Live Load: 1.5 kPa		Ver: Floor 1.9.4
Spacing: 600	Ceiling Material: Plaster 10mm Supa Span (8.2 kg/m²)	Point Load: 1.8 kN		Date: 14/02/2019
Quantity: 1	Ceiling Fixing: Metal direct @ 600c	Design: AS 1720.1-2010		Page: 13 of 27

Client: DEDICATED DEVELOPMENT PTY LTD	Trusstech SA Pty Ltd 16 High St., Dry Creek, SA 5094 Joist Name: FJ10 Type: SJ 400 Joists: FJ28, FJ29, FJ30, FJ31, FJ32	Job No: TT02399
Site: 638 BURBRIDGE RD WEST BEACH SA 5024 AUS		Weight: 11.69 kg
Ref: DWELLING 3		Total Weight: 58.47 kg Laminations: 1



TIMBER / PLATES


Member	Size	Plating	Restraint
BC1	90x35-MGP10 H0 ADS	JD5	600
LBlock1	90x35-MGP10 H0 ADS	JD5	
LEW1	90x35-MGP10 H0 ADS	JD5	
TC1	90x35-MGP10 H0 ADS	JD5	300
W1	90x35-MGP10 H0 ADS	JD5	
W2	90x35-MGP10 H0 ADS	JD5	
W3	90x35-MGP10 H0 ADS	JD5	
W4	90x35-MGP10 H0 ADS	JD5	
W5	90x35-MGP10 H0 ADS	JD5	
W6	90x35-MGP10 H0 ADS	JD5	
REW1	90x35-MGP10 H0 ADS	JD5	
RBlock1	90x35-MGP10 H0 ADS	JD5	

Vertical Reactions at Supports

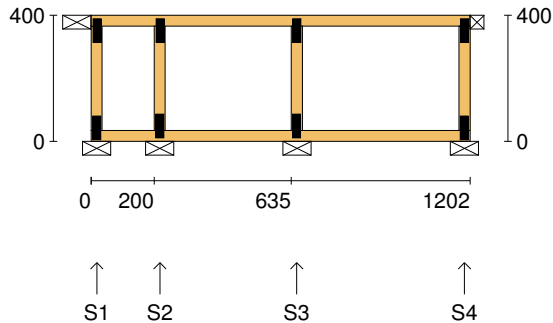
	S1	S2
1.35DL (kN)	0.22	0.31
1.2DL + 1.5LL (kN)	1.08	1.46

Joint Nail Plate

BL2-1	25x75-MN
TL1	25x75-MN
BL2	25x75-MN
T1	75x100-MN
B1	25x75-MN
B2	75x100-MN
T2	75x100-MN
B3	75x100-MN
T3	25x75-MN
BR1	25x75-MN
T4	75x100-MN
BR1-1	25x75-MN

Span: 1635	Floor Material: Particle (15.4 kg/m²)	Application: General Areas	All dimensions in millimetres. This drawing should be read in conjunction with Multinail Technical sheets. Wall plates must be placed at supports only.	016020 (TN-016-020)
Overhang: 0/0	Floor Covering: Std Carpet + Underlay (8 kg/m²)	Live Load: 1.5 kPa		Ver: Floor 1.9.4
Spacing: 600	Ceiling Material: Plaster 10mm Supa Span (8.2 kg/m²)	Point Load: 1.8 kN		Date: 14/02/2019
Quantity: 5	Ceiling Fixing: Metal direct @ 600c	Design: AS 1720.1-2010		Page: 14 of 27

Client: DEDICATED DEVELOPMENT PTY LTD	Trusstech SA Pty Ltd 16 High St., Dry Creek, SA 5094 Joist Name: FJ11 Type: SJ 400 Ladder Joists: FJ33	Job No: TT02399
Site: 638 BURBRIDGE RD WEST BEACH SA 5024 AUS		Weight: 6.14 kg
Ref: DWELLING 3		Total Weight: 6.14 kg Laminations: 1



TIMBER / PLATES


Member	Size	Plating	Restraint
BC1	90x35-MGP10 H0 ADS	JD5	600
LEW1	90x35-MGP10 H0 ADS	JD5	
TC1	90x35-MGP10 H0 ADS	JD5	300
W1	90x35-MGP10 H0 ADS	JD5	
W2	90x35-MGP10 H0 ADS	JD5	
REW1	90x35-MGP10 H0 ADS	JD5	

Vertical Reactions at Supports

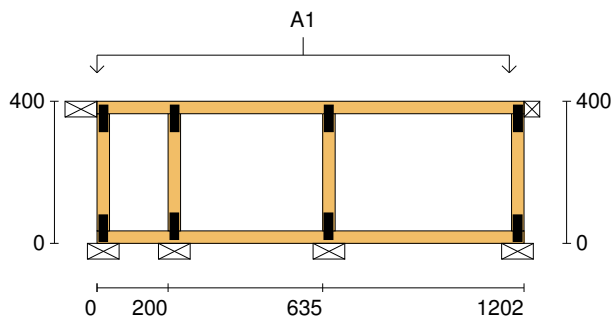
	S1	S2	S3	S4
1.35DL (kN)	0.03	0.15	0.27	0.10
1.2DL + 1.5LL (kN)	0.11	0.55	1.03	0.38

Joint Nail Plate

TL1	25x75-MN
BL2	25x75-MN
T1	25x75-MN
B1	25x75-MN
T2	25x75-MN
B2	25x75-MN
TR1	25x75-MN
BR2	25x75-MN


Span: 1202	Floor Material: Particle (15.4 kg/m²)	Application: General Areas	All dimensions in millimetres. This drawing should be read in conjunction with Multinail Technical sheets. Wall plates must be placed at supports only.	016020 (TN-016-020)
Overhang: 0/0	Floor Covering: Std Carpet + Underlay (8 kg/m²)	Live Load: 1.5 kPa		Ver: Floor 1.9.4
Spacing: 600	Ceiling Material: Plaster 10mm Supa Span (8.2 kg/m²)	Point Load: 1.8 kN		Date: 14/02/2019
Quantity: 1	Ceiling Fixing: Metal direct @ 600c	Design: AS 1720.1-2010		Page: 15 of 27

Client: DEDICATED DEVELOPMENT PTY LTD	Trusstech SA Pty Ltd 16 High St., Dry Creek, SA 5094 Joist Name: FJ11 Type: SJ 400 Ladder Joists: FJ33	Job No: TT02399
Site: 638 BURBRIDGE RD WEST BEACH SA 5024 AUS		Weight: 6.14 kg
Ref: DWELLING 3		Total Weight: 6.14 kg Laminations: 1

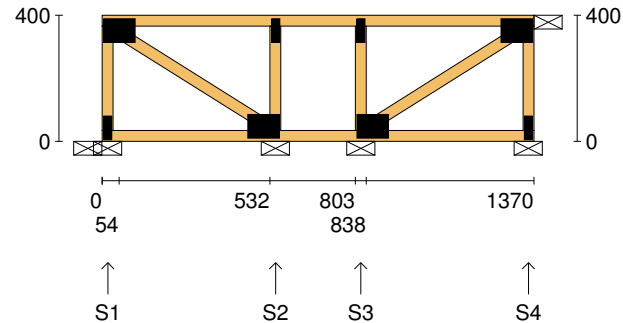


User Def. Load A1
43.50 kg/m²
WET AREA

Applied Load
DL (kN)
LL (kN)
WL Up (kN)
WL Dn (kN)

Span: 1202	Floor Material: Particle (15.4 kg/m²)	Application: General Areas	All dimensions in millimetres. This drawing should be read in conjunction with Multinail Technical sheets. Wall plates must be placed at supports only.	016020 (TN-016-020)
Overhang: 0/0	Floor Covering: Std Carpet + Underlay (8 kg/m²)	Live Load: 1.5 kPa		Ver: Floor 1.9.4
Spacing: 600	Ceiling Material: Plaster 10mm Supa Span (8.2 kg/m²)	Point Load: 1.8 kN		Date: 14/02/2019
Quantity: 1	Ceiling Fixing: Metal direct @ 600c	Design: AS 1720.1-2010		Page: 16 of 27

Client: DEDICATED DEVELOPMENT PTY LTD	Trusstech SA Pty Ltd 16 High St., Dry Creek, SA 5094	Job No: TT02399
Site: 638 BURBRIDGE RD WEST BEACH SA 5024 AUS		Weight: 8.87 kg
Ref: DWELLING 3	Joist Name: FJ12 Type: SJ 400 Ladder Joists: FJ34	Total Weight: 8.87 kg
		Laminations: 1



TIMBER / PLATES


Member	Size	Plating	Restraint
BC1	90x35-MGP10 H0 ADS	JD5	600
LEW1	90x35-MGP10 H0 ADS	JD5	
TC1	90x35-MGP10 H0 ADS	JD5	300
W1	90x35-MGP10 H0 ADS	JD5	
W2	90x35-MGP10 H0 ADS	JD5	
W3	90x35-MGP10 H0 ADS	JD5	
W4	90x35-MGP10 H0 ADS	JD5	
REW1	90x35-MGP10 H0 ADS	JD5	

Vertical Reactions at Supports

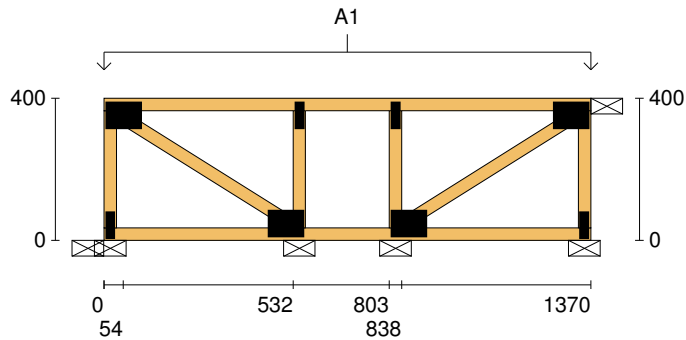
	S1	S2	S3	S4
1.35DL (kN)	0.11	0.22	0.22	0.11
1.2DL + 1.5LL (kN)	0.37	0.83	0.83	0.37

Joint Nail Plate

T1	75x100-MN
BL1	25x75-MN
B1	75x100-MN
T2	25x75-MN
B2	75x100-MN
T3	25x75-MN
BR1	25x75-MN
T4	75x100-MN


Span: 1370	Floor Material: Particle (15.4 kg/m²)	Application: General Areas	All dimensions in millimetres. This drawing should be read in conjunction with Multinail Technical sheets. Wall plates must be placed at supports only.	016020 (TN-016-020)
Overhang: 0/0	Floor Covering: Std Carpet + Underlay (8 kg/m²)	Live Load: 1.5 kPa		Ver: Floor 1.9.4
Spacing: 600	Ceiling Material: Plaster 10mm Supa Span (8.2 kg/m²)	Point Load: 1.8 kN		Date: 14/02/2019
Quantity: 1	Ceiling Fixing: Metal direct @ 600c	Design: AS 1720.1-2010		Page: 17 of 27

Client: DEDICATED DEVELOPMENT PTY LTD	Trusstech SA Pty Ltd 16 High St., Dry Creek, SA 5094 Joist Name: FJ12 Type: SJ 400 Ladder Joists: FJ34	Job No: TT02399
Site: 638 BURBRIDGE RD WEST BEACH SA 5024 AUS		Weight: 8.87 kg
Ref: DWELLING 3		Total Weight: 8.87 kg Laminations: 1

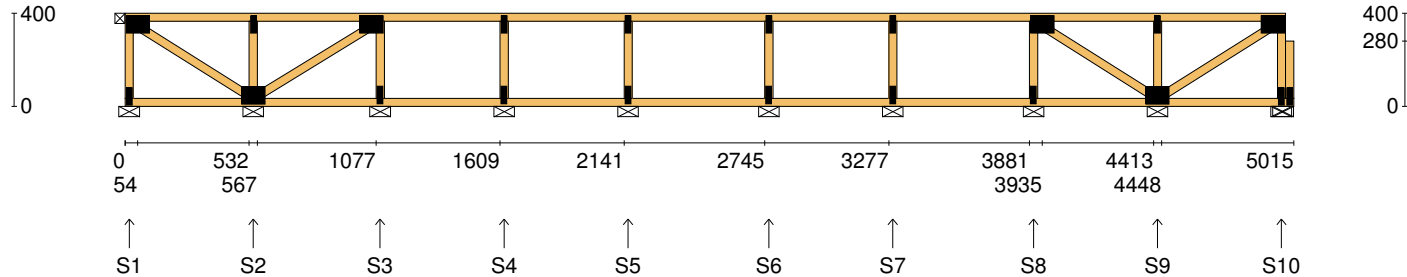


User Def. Load A1
43.50 kg/m²
WET AREA

Applied Load
DL (kN)
LL (kN)
WL Up (kN)
WL Dn (kN)

Span: 1370	Floor Material: Particle (15.4 kg/m²)	Application: General Areas	All dimensions in millimetres. This drawing should be read in conjunction with Multinail Technical sheets. Wall plates must be placed at supports only.	016020 (TN-016-020)
Overhang: 0/0	Floor Covering: Std Carpet + Underlay (8 kg/m²)	Live Load: 1.5 kPa		Ver: Floor 1.9.4
Spacing: 600	Ceiling Material: Plaster 10mm Supa Span (8.2 kg/m²)	Point Load: 1.8 kN		Date: 14/02/2019
Quantity: 1	Ceiling Fixing: Metal direct @ 600c	Design: AS 1720.1-2010		Page: 18 of 27

Client: DEDICATED DEVELOPMENT PTY LTD	Trusstech SA Pty Ltd 16 High St., Dry Creek, SA 5094	Job No: TT02399
Site: 638 BURBRIDGE RD WEST BEACH SA 5024 AUS		Weight: 26.25 kg
Ref: DWELLING 3	Joist Name: FJ13 Type: SJ 400 Ladder Joists: FJ35	Total Weight: 26.25 kg
		Laminations: 1



TIMBER / PLATES


Member	Size	Plating	Restraint
BC1	90x35-MGP10 H0 ADS	JD5	600
LEW1	90x35-MGP10 H0 ADS	JD5	
TC1	90x35-MGP10 H0 ADS	JD5	300
W1	90x35-MGP10 H0 ADS	JD5	
W2	90x35-MGP10 H0 ADS	JD5	
W3	90x35-MGP10 H0 ADS	JD5	
W4	90x35-MGP10 H0 ADS	JD5	
W5	90x35-MGP10 H0 ADS	JD5	
W6	90x35-MGP10 H0 ADS	JD5	
W7	90x35-MGP10 H0 ADS	JD5	
W8	90x35-MGP10 H0 ADS	JD5	
W9	90x35-MGP10 H0 ADS	JD5	
W10	90x35-MGP10 H0 ADS	JD5	

- 4 more members were not shown -

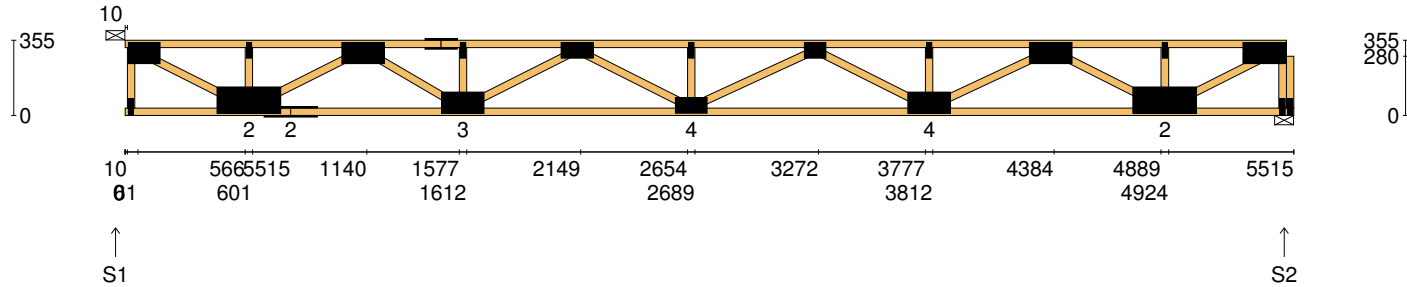
Vertical Reactions at Supports

	S1	S2	S3	S4	S5	S6	S7	S8	S9	S10
1.35DL (kN)	0.07	0.22	0.16	0.16	0.18	0.17	0.18	0.17	0.21	0.07
1.2DL + 1.5LL (kN)	0.30	1.12	0.79	0.84	0.94	0.92	0.92	0.85	1.10	0.30

Joint	Nail Plate	Joint	Nail Plate
T1	75x100-MN	B6	25x75-MN
BL1	25x75-MN	T8	75x100-MN
B1	75x100-MN	B7	25x75-MN
T2	25x75-MN	B8	75x100-MN
T3	75x100-MN	T9	25x75-MN
B2	25x75-MN	BR1	25x75-MN
T4	25x75-MN	T10	75x100-MN
B3	25x75-MN	BR1-1	25x75-MN
T5	25x75-MN		
B4	25x75-MN		
T6	25x75-MN		
B5	25x75-MN		
T7	25x75-MN		

Span: 5015	Floor Material: Particle (15.4 kg/m²)	Application: General Areas	All dimensions in millimetres. This drawing should be read in conjunction with Multinail Technical sheets. Wall plates must be placed at supports only.	016020 (TN-016-020)
Overhang: 0/0	Floor Covering: Std Carpet + Underlay (8 kg/m²)	Live Load: 1.5 kPa		Ver: Floor 1.9.4
Spacing: 600	Ceiling Material: Plaster 10mm Supa Span (8.2 kg/m²)	Point Load: 1.8 kN		Date: 14/02/2019
Quantity: 1	Ceiling Fixing: Metal direct @ 600c	Design: AS 1720.1-2010		Page: 19 of 27

Client: DEDICATED DEVELOPMENT PTY LTD	Trusstech SA Pty Ltd 16 High St., Dry Creek, SA 5094	Job No: TT02399
Site: 638 BURBRIDGE RD WEST BEACH SA 5024 AUS		Weight: 36.12 kg
Ref: DWELLING 3	Joist Name: FJ14 Type: SJ 355 Joists: FJ42	Total Weight: 36.12 kg
		Laminations: 1



TIMBER / PLATES


Member	Size	Plating	Restraint
BC1	90x35-HC H0 MAN	JD5	600
TC1	90x35-MGP10 H0 ADS	JD5	300
LEW1	90x35-MGP10 H0 ADS	JD5	
W1	90x35-MGP10 H0 ADS	JD5	
W2	90x35-MGP10 H0 ADS	JD5	
W3	90x35-MGP10 H0 ADS	JD5	
BC2	90x35-HC H0 MAN	JD5	600
W4	90x35-MGP10 H0 ADS	JD5	
TC2	90x35-MGP10 H0 ADS	JD5	300
W5	90x35-MGP10 H0 ADS	JD5	
W6	90x35-MGP10 H0 ADS	JD5	
W7	90x35-MGP10 H0 ADS	JD5	
W8	90x35-MGP10 H0 ADS	JD5	

- 9 more members were not shown -

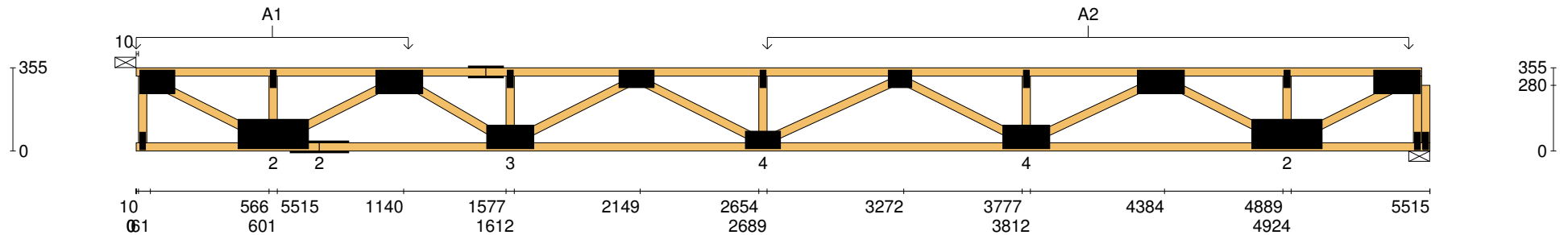
Vertical Reactions at Supports


	S1	S2
1.35DL (kN)	1.22	1.41
1.2DL + 1.5LL (kN)	4.89	5.31

Joint	Nail Plate	Joint	Nail Plate
T1	100x150-MN	B5	100x200-MN
BL1	25x75-MN	T9	25x75-MN
B1	125x300-MN	T10	100x200-MN
T2	25x75-MN	B6	125x300-MN
B2	75x250-MN	T11	25x75-MN
T3	100x200-MN	BR1	25x75-MN
T4	75x150-MN	T12	100x200-MN
B3	100x200-MN	BR1-1	25x75-MN
T5	25x75-MN		
T6	75x150-MN		
B4	75x150-MN		
T7	25x75-MN		
T8	75x100-MN		

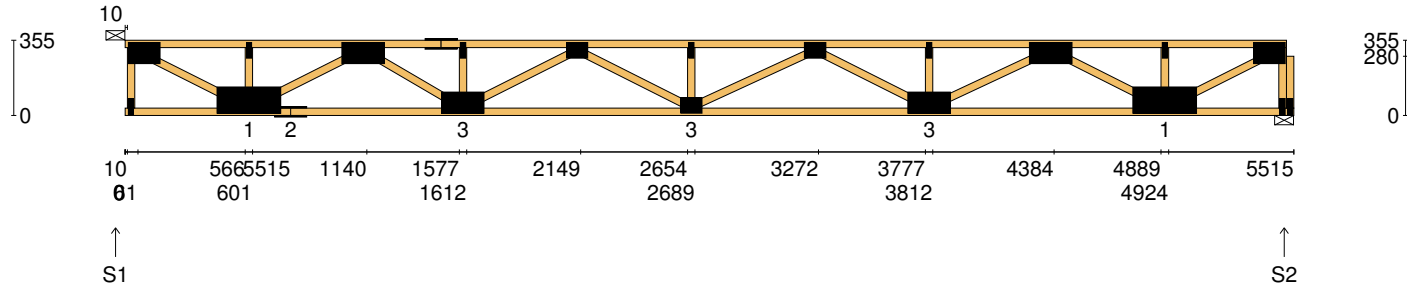
Span: 5515	Floor Material: Particle (15.4 kg/m²)	Application: General Areas	All dimensions in millimetres. This drawing should be read in conjunction with Multinail Technical sheets. Wall plates must be placed at supports only.	016020 (TN-016-020)
Overhang: 0/0	Floor Covering: Std Carpet + Underlay (8 kg/m²)	Live Load: 1.5 kPa		Ver: Floor 1.9.4
Spacing: 600	Ceiling Material: Plaster 10mm Supa Span (8.2 kg/m²)	Point Load: 1.8 kN		Date: 14/02/2019
Quantity: 1	Ceiling Fixing: Metal direct @ 600c	Design: AS 1720.1-2010		Page: 20 of 27

Client: DEDICATED DEVELOPMENT PTY LTD	Trusstech SA Pty Ltd 16 High St., Dry Creek, SA 5094 Joist Name: FJ14 Type: SJ 355 Joists: FJ42	Job No: TT02399
Site: 638 BURBRIDGE RD WEST BEACH SA 5024 AUS		Weight: 36.12 kg
Ref: DWELLING 3		Total Weight: 36.12 kg Laminations: 1



User Def. Load		A1	A2		
		43.50 kg/m²	165.07 kg/m²		
		WET AREA	WET AREA		
Applied Load					
DL (kN)					
LL (kN)					
WL Up (kN)					
WL Dn (kN)					
Span:	5515	Floor Material: Particle (15.4 kg/m²)	Application: General Areas	All dimensions in millimetres. This drawing should be read in conjunction with Multinail Technical sheets. Wall plates must be placed at supports only.	016020 (TN-016-020)
Overhang:	0/0	Floor Covering: Std Carpet + Underlay (8 kg/m²)	Live Load: 1.5 kPa		Ver: Floor 1.9.4
Spacing:	600	Ceiling Material: Plaster 10mm Supa Span (8.2 kg/m²)	Point Load: 1.8 kN		Date: 14/02/2019
Quantity:	1	Ceiling Fixing: Metal direct @ 600c	Design: AS 1720.1-2010		Page: 21 of 27

Client: DEDICATED DEVELOPMENT PTY LTD	Trusstech SA Pty Ltd 16 High St., Dry Creek, SA 5094	Job No: TT02399
Site: 638 BURBRIDGE RD WEST BEACH SA 5024 AUS	Joist Name: FJ15 Type: SJ 355	Weight: 35.80 kg
Ref: DWELLING 3	Joists: FJ43, FJ44, FJ45	Total Weight: 107.39 kg
		Laminations: 1



TIMBER / PLATES


Member	Size	Plating	Restraint
BC1	90x35-HC H0 MAN	JD5	600
TC1	90x35-MGP10 H0 ADS	JD5	300
LEW1	90x35-MGP10 H0 ADS	JD5	
W1	90x35-MGP10 H0 ADS	JD5	
W2	90x35-MGP10 H0 ADS	JD5	
W3	90x35-MGP10 H0 ADS	JD5	
BC2	90x35-HC H0 MAN	JD5	600
W4	90x35-MGP10 H0 ADS	JD5	
TC2	90x35-MGP10 H0 ADS	JD5	300
W5	90x35-MGP10 H0 ADS	JD5	
W6	90x35-MGP10 H0 ADS	JD5	
W7	90x35-MGP10 H0 ADS	JD5	
W8	90x35-MGP10 H0 ADS	JD5	

- 9 more members were not shown -

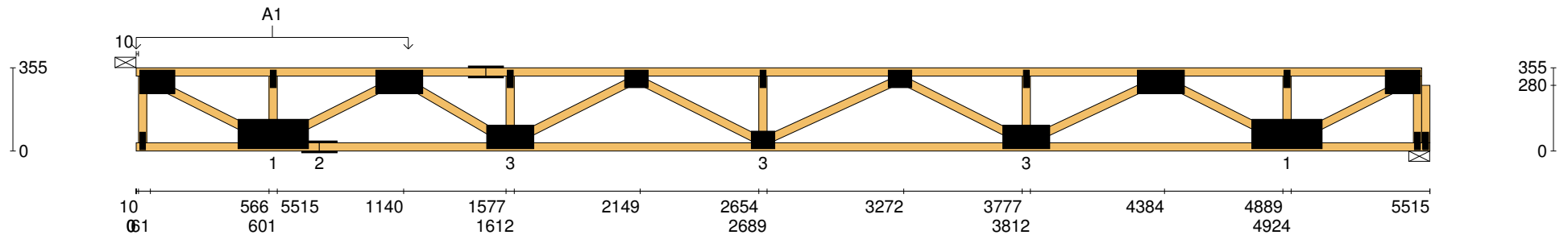
Vertical Reactions at Supports

	S1	S2
1.35DL (kN)	1.05	0.91
1.2DL + 1.5LL (kN)	4.60	4.48

Joint	Nail Plate	Joint	Nail Plate
T1	100x150-MN	B5	100x200-MN
BL1	25x75-MN	T9	25x75-MN
B1	125x300-MN	T10	100x200-MN
T2	25x75-MN	B6	125x300-MN
B2	75x150-MN	T11	25x75-MN
T3	100x200-MN	BR1	25x75-MN
T4	75x150-MN	T12	100x150-MN
B3	100x200-MN	BR1-1	25x75-MN
T5	25x75-MN		
T6	75x100-MN		
B4	75x100-MN		
T7	25x75-MN		
T8	75x100-MN		

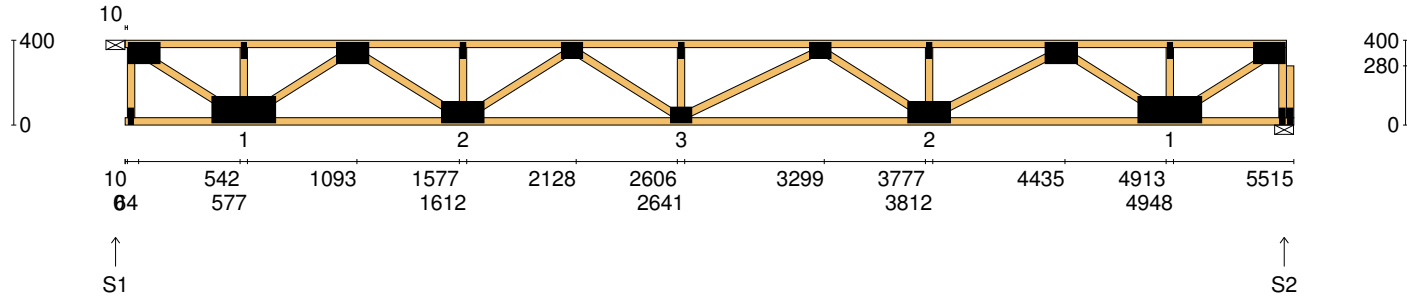
Span: 5515	Floor Material: Particle (15.4 kg/m²)	Application: General Areas	All dimensions in millimetres. This drawing should be read in conjunction with Multinail Technical sheets.	016020 (TN-016-020)
Overhang: 0/0	Floor Covering: Std Carpet + Underlay (8 kg/m²)	Live Load: 1.5 kPa	Wall plates must be placed at supports only.	Ver: Floor 1.9.4
Spacing: 600	Ceiling Material: Plaster 10mm Supa Span (8.2 kg/m²)	Point Load: 1.8 kN		Date: 14/02/2019
Quantity: 3	Ceiling Fixing: Metal direct @ 600c	Design: AS 1720.1-2010		Page: 22 of 27

Client: DEDICATED DEVELOPMENT PTY LTD	Trusstech SA Pty Ltd 16 High St., Dry Creek, SA 5094	Job No: TT02399
Site: 638 BURBRIDGE RD WEST BEACH SA 5024 AUS		Weight: 35.80 kg
Ref: DWELLING 3	Joist Name: FJ15 Type: SJ 355 Joists: FJ43, FJ44, FJ45	Total Weight: 107.39 kg
		Laminations: 1



User Def. Load		A1 43.50 kg/m² WET AREA			
Applied Load DL (kN) LL (kN) WL Up (kN) WL Dn (kN)					
Span:	5515	Floor Material: Particle (15.4 kg/m²)	Application: General Areas	All dimensions in millimetres. This drawing should be read in conjunction with Multinail Technical sheets. Wall plates must be placed at supports only.	016020 (TN-016-020)
Overhang:	0/0	Floor Covering: Std Carpet + Underlay (8 kg/m²)	Live Load: 1.5 kPa		Ver: Floor 1.9.4
Spacing:	600	Ceiling Material: Plaster 10mm Supa Span (8.2 kg/m²)	Point Load: 1.8 kN		Date: 14/02/2019
Quantity:	3	Ceiling Fixing: Metal direct @ 600c	Design: AS 1720.1-2010		Page: 23 of 27

Client: DEDICATED DEVELOPMENT PTY LTD	Trusstech SA Pty Ltd 16 High St., Dry Creek, SA 5094	Job No: TT02399
Site: 638 BURBRIDGE RD WEST BEACH SA 5024 AUS		Weight: 34.33 kg
Ref: DWELLING 3	Joist Name: FJ16 Type: SJ 400 Joists: FJ46	Total Weight: 34.33 kg
		Laminations: 1



TIMBER / PLATES


Member	Size	Plating	Restraint
BC1	90x35-MGP10 H0 ADS	JD5	600
TC1	90x35-MGP10 H0 ADS	JD5	300
LEW1	90x35-MGP10 H0 ADS	JD5	
W1	90x35-MGP10 H0 ADS	JD5	
W2	90x35-MGP10 H0 ADS	JD5	
W3	90x35-MGP10 H0 ADS	JD5	
W4	90x35-MGP10 H0 ADS	JD5	
W5	90x35-MGP10 H0 ADS	JD5	
W6	90x35-MGP10 H0 ADS	JD5	
W7	90x35-MGP10 H0 ADS	JD5	
W8	90x35-MGP10 H0 ADS	JD5	
W9	90x35-MGP10 H0 ADS	JD5	
W10	90x35-MGP10 H0 ADS	JD5	

- 7 more members were not shown -

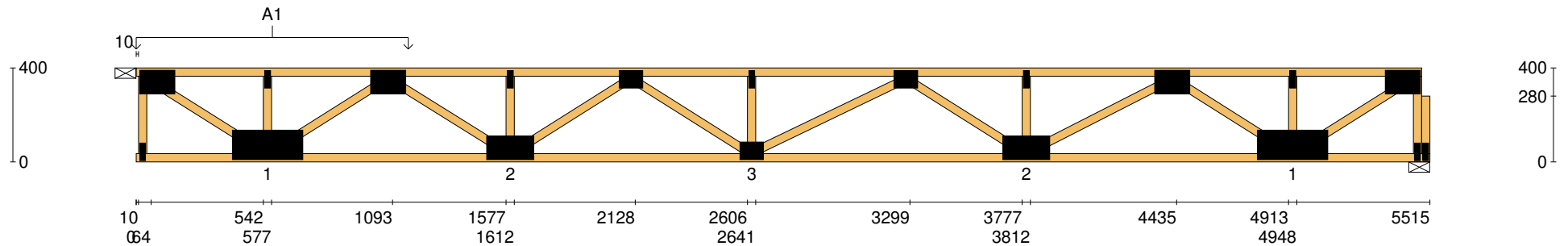
Vertical Reactions at Supports

	S1	S2
1.35DL (kN)	1.06	0.92
1.2DL + 1.5LL (kN)	4.61	4.48

Joint	Nail Plate	Joint	Nail Plate
T1	100x150-MN	T9	100x150-MN
BL1	25x75-MN	B5	125x300-MN
B1	125x300-MN	T10	25x75-MN
T2	25x75-MN	BR1	25x75-MN
T3	100x150-MN	T11	100x150-MN
B2	100x200-MN	BR1-1	25x75-MN
T4	25x75-MN		
T5	75x100-MN		
B3	75x100-MN		
T6	25x75-MN		
T7	75x100-MN		
B4	100x200-MN		
T8	25x75-MN		

Span: 5515	Floor Material: Particle (15.4 kg/m²)	Application: General Areas	All dimensions in millimetres. This drawing should be read in conjunction with Multinail Technical sheets. Wall plates must be placed at supports only.	016020 (TN-016-020)
Overhang: 0/0	Floor Covering: Std Carpet + Underlay (8 kg/m²)	Live Load: 1.5 kPa		Ver: Floor 1.9.4
Spacing: 600	Ceiling Material: Plaster 10mm Supa Span (8.2 kg/m²)	Point Load: 1.8 kN		Date: 14/02/2019
Quantity: 1	Ceiling Fixing: Metal direct @ 600c	Design: AS 1720.1-2010		Page: 24 of 27

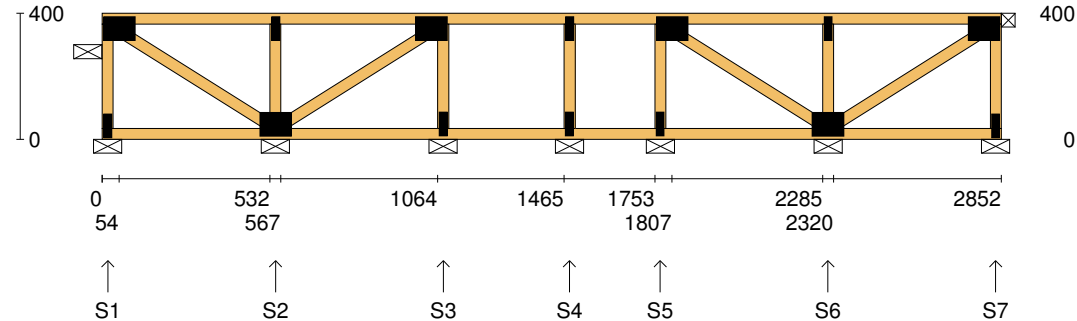
Client: DEDICATED DEVELOPMENT PTY LTD	Trusstech SA Pty Ltd 16 High St., Dry Creek, SA 5094 Joist Name: FJ16 Type: SJ 400 Joists: FJ46	Job No: TT02399
Site: 638 BURBRIDGE RD WEST BEACH SA 5024 AUS		Weight: 34.33 kg
Ref: DWELLING 3		Total Weight: 34.33 kg Laminations: 1



User Def. Load		A1 43.50 kg/m² WET AREA	
Applied Load DL (kN) LL (kN) WL Up (kN) WL Dn (kN)			
Span:	5515	Floor Material:	Particle (15.4 kg/m²)
Overhang:	0/0	Floor Covering:	Std Carpet + Underlay (8 kg/m²)
Spacing:	600	Ceiling Material:	Plaster 10mm Supa Span (8.2 kg/m²)
Quantity:	1	Ceiling Fixing:	Metal direct @ 600c
		Application:	General Areas
		Live Load:	1.5 kPa
		Point Load:	1.8 kN
		Design:	AS 1720.1-2010
All dimensions in millimetres. This drawing should be read in conjunction with Multinail Technical sheets. Wall plates must be placed at supports only.			
			016020 (TN-016-020)
			Ver: Floor 1.9.4
			Date: 14/02/2019
			Page: 25 of 27



Client: DEDICATED DEVELOPMENT PTY LTD	Trusstech SA Pty Ltd 16 High St., Dry Creek, SA 5094	Job No: TT02399
Site: 638 BURBRIDGE RD WEST BEACH SA 5024 AUS		Weight: 17.29 kg
Ref: DWELLING 3	Joist Name: FJ17 Type: SJ 400 Ladder Joists: FJ47	Total Weight: 17.29 kg
		Laminations: 1




TIMBER / PLATES

Member	Size	Plating	Restraint
BC1	90x35-MGP10 H0 ADS	JD5	600
LEW1	90x35-MGP10 H0 ADS	JD5	
TC1	90x35-MGP10 H0 ADS	JD5	300
W1	90x35-MGP10 H0 ADS	JD5	
W2	90x35-MGP10 H0 ADS	JD5	
W3	90x35-MGP10 H0 ADS	JD5	
W4	90x35-MGP10 H0 ADS	JD5	
W5	90x35-MGP10 H0 ADS	JD5	
W6	90x35-MGP10 H0 ADS	JD5	
W7	90x35-MGP10 H0 ADS	JD5	
W8	90x35-MGP10 H0 ADS	JD5	
W9	90x35-MGP10 H0 ADS	JD5	
REW1	90x35-MGP10 H0 ADS	JD5	

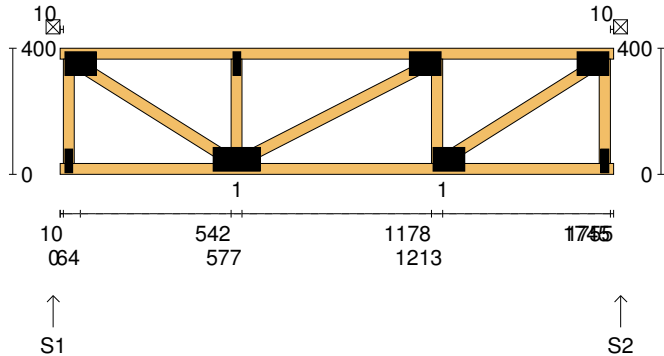
Vertical Reactions at Supports

	S1	S2	S3	S4	S5	S6	S7
1.35DL (kN)	0.07	0.22	0.14	0.09	0.12	0.22	0.07
1.2DL + 1.5LL (kN)	0.30	1.13	0.70	0.48	0.60	1.13	0.31

Joint	Nail Plate	Joint	Nail Plate
T1	75x100-MN	T7	75x100-MN
BL1	25x75-MN		
B1	75x100-MN		
T2	25x75-MN		
T3	75x100-MN		
B2	25x75-MN		
T4	25x75-MN		
B3	25x75-MN		
T5	75x100-MN		
B4	25x75-MN		
B5	75x100-MN		
T6	25x75-MN		
BR1	25x75-MN		

Span: 2852	Floor Material: Particle (15.4 kg/m²)	Application: General Areas	All dimensions in millimetres. This drawing should be read in conjunction with Multinail Technical sheets. Wall plates must be placed at supports only.	016020 (TN-016-020)
Overhang: 0/0	Floor Covering: Std Carpet + Underlay (8 kg/m²)	Live Load: 1.5 kPa		Ver: Floor 1.9.4
Spacing: 600	Ceiling Material: Plaster 10mm Supa Span (8.2 kg/m²)	Point Load: 1.8 kN		Date: 14/02/2019
Quantity: 1	Ceiling Fixing: Metal direct @ 600c	Design: AS 1720.1-2010		Page: 26 of 27

Client: DEDICATED DEVELOPMENT PTY LTD	Trusstech SA Pty Ltd 16 High St., Dry Creek, SA 5094	Job No: TT02399
Site: 638 BURBRIDGE RD WEST BEACH SA 5024 AUS		Weight: 11.28 kg
Ref: DWELLING 3	Joist Name: FJ18 Type: SJ 400 Joists: FJ36, FJ37, FJ38, FJ39, FJ40, FJ41	Total Weight: 67.70 kg
		Laminations: 1



TIMBER / PLATES


Member	Size	Plating	Restraint
BC1	90x35-MGP10 H0 ADS	JD5	600
TC1	90x35-MGP10 H0 ADS	JD5	
LEW1	90x35-MGP10 H0 ADS	JD5	
W1	90x35-MGP10 H0 ADS	JD5	
W2	90x35-MGP10 H0 ADS	JD5	
W3	90x35-MGP10 H0 ADS	JD5	
W4	90x35-MGP10 H0 ADS	JD5	
W5	90x35-MGP10 H0 ADS	JD5	
REW1	90x35-MGP10 H0 ADS	JD5	

Vertical Reactions at Supports

	S1	S2
1.35DL (kN)	0.27	0.27
1.2DL + 1.5LL (kN)	1.10	1.10

Joint Nail Plate

T1	75x100-MN
BL1	25x75-MN
B1	75x150-MN
T2	25x75-MN
T3	75x100-MN
B2	75x100-MN
BR1	25x75-MN
T4	75x100-MN

Span: 1755	Floor Material: Fibre Board (23.5 kg/m²)	Application: General Areas	All dimensions in millimetres. This drawing should be read in conjunction with Multinail Technical sheets. Wall plates must be placed at supports only.	016020 (TN-016-020)
Overhang: 0/0	Floor Covering: Std Carpet + Underlay (8 kg/m²)	Live Load: 1.5 kPa		Ver: Floor 1.9.4
Spacing: 450	Ceiling Material: Plaster 10mm Supa Span (8.2 kg/m²)	Point Load: 1.8 kN		Date: 14/02/2019
Quantity: 6	Ceiling Fixing: Metal direct @ 600c	Design: AS 1720.1-2010		Page: 27 of 27